

● Flex-Seal Products

● Bushes (11-2100mm diameter)

Drain and Sewer Pipe Connection - Designed for use with couplings when connecting pipes of significantly different outside diameters

Introduction

Flex-Seal can provide two types of Bushes: **Fabricated or Moulded**.

Fabricated

Designed to be used with Flex-Seal Standard Couplings, Bushes are available in a range of sizes and thicknesses that allow for the adaptation between all pipe materials and types.

Fabricated from an elastomeric strip, Flex-Seal's Fabricated Bushes are manufactured to suit specific site dimensions and are used when there is a significant difference in the outside diameter (greater than 12mm) of the pipes to be connected or if an Adaptor Coupling is not available.

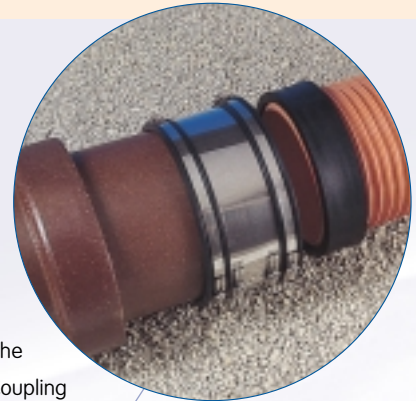
Flex-Seal Bushes can also be used when a reduction or increase in the pipe size is required by the user. Utilising Flex-Seal's advanced production processes and techniques, thicker Bushes can be manufactured with a profiled cross section which enhances the seal on rough pipe surfaces and provides a high performance seal on low pressure pipes due to an increase in the effective sealing pressure.

Flex-Seal can also supply Fabricated Bushes with nitrile sleeves (See sheet 31).

Moulded

Moulded Bushes are available in a range of sizes for similar applications to fabricated Bushes and are used when there is a significant difference in the outside diameter (greater than 12mm) of the pipes to be connected or if an Adaptor Coupling is not available.

Flex-Seal can also supply Moulded Bushes in nitrile material (See sheet 31).

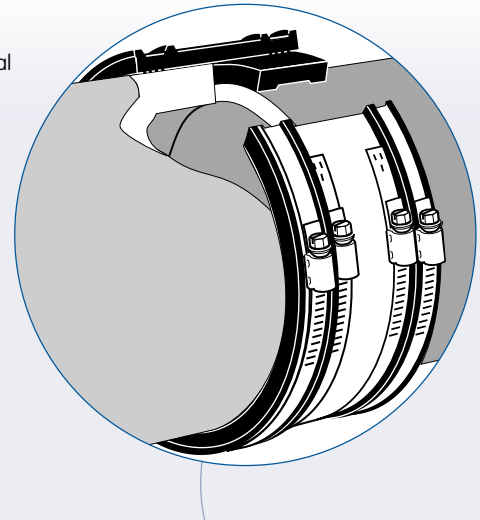


Benefits

- Can be manufactured to suit specific site and application requirements
- Provide a high performance seal on low pressure pipes
- Versatility in application enables the bush to be used when a reduction or increase in pipe size is needed
- Manufactured to meet the WIS standard

Applications

- Bushes are used when outside diameters of the pipe are significantly different
- Multiple combinations of Bushes are available (contact the Flex-Seal Technical Department for more information)
- Certain Bushes can be used with Adaptor Couplings to increase the effective range



MOULDED 11-335mm dia

Bush Ref. No.	Size Range I.D. (mm)	NOM. O.D. (mm)
BC19/17	11 - 16	55
BC17/21	15 - 20	55
BC14/26	20 - 25	55
BC09/37	30 - 37	55
BC06/43	35 - 40	55
BC23/65	55 - 65	110
BC17/76	65 - 76	110
BC08/95	85 - 95	110
BC27/65	55 - 65	120
BC12/95	85 - 95	120
BC06/102	92 - 102	115
BC08/105	95 - 105	120
BC20/105	95 - 105	145
BC08/115	105 - 115	130
BC15/115	105 - 115	145
BC07/132	122 - 132	145
BC19/132	122 - 132	170
BC13/145	135 - 145	170
BC16/164	154 - 164	196
BC26/168	158 - 168	220
BC08/170	160 - 170	185
BC08/180	170 - 180	196
BC08/200M	190 - 200	215
BC33/205	195 - 205	270
BC08/265	255 - 265	280
BC20/335	325 - 335	380

Also available in nitrile rubber

FABRICATED 135-2100mm dia

Bush Size I.D. (mm)	Bush Thickness (mm)					
	4	8	12	16	24	32
135 - 199		•				
200 - 299	•	•	•	•		
300 - 399	•	•	•	•	•	•
400 - 499	•	•	•	•	•	•
500 - 599	•	•	•	•	•	•
600 - 699	•	•	•	•	•	•
700 - 799	•	•	•	•	•	•
800 - 899	•	•	•	•	•	•
900 - 999	•	•	•	•	•	•
1000 - 1099	•	•	•	•	•	•
1100 - 1199	•	•	•	•	•	•
1200 - 1299	•	•	•	•	•	•
1300 - 1399	•	•	•	•	•	•
1400 - 1999	•	•	•	•	•	•
2000 - 2099	•	•	•	•	•	•

Also available in nitrile rubber

Note: The fabricated bush size range is an indication of size for ordering purposes only and not the range of one bush. Bushes are manufactured individually to suit customer requirements.



Global Solutions for Pipe Connection and Repair

Endeavour Works, Newlands Way, Valley Park, Wombwell, Barnsley S73 0UW, England

General Tel: +44 (0) 1226 340 222 Fax: +44 (0) 1226 340 400

E-mail: sales@flexseal.co.uk Web Site: www.flexseal.co.uk