

# EASY

The system:

- it supports 3 load classes (A15, B125, C250) in compliance with Standard EN 1433
- it is made up of a channel - entirely made from HD-PE - which needs no strengthening frame
- it comprises 4 different types of gratings (with rungs, slots, square mesh, anti-heel mesh) made from galvanised steel, stainless steel and ductile cast-iron
- it comes equipped with a classic tie-rod fixing system
- it is ideal for household and civil uses, pedestrian areas, private car parks, footways, canalisation systems in roads and parking areas
- it is ideal whenever high-quality aesthetic finishes are to be achieved, since the gratings rest directly on the channel's contact surface, thus covering it completely
- it comes complete with drain gullies with siphon
- the range is made up of 6 channels with 3 widths and 2 heights (100/100, 100/160, 150/100, 150/160, 200/100, 200/160)



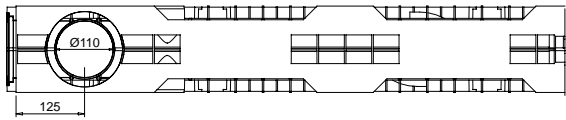


100

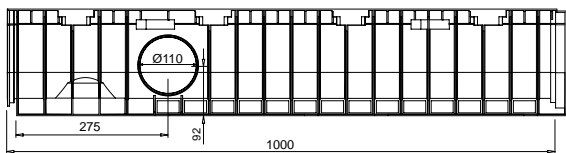


# CHANNELS

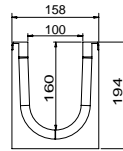
## EASY 100



VIEW FROM BELOW



SIDE VIEW

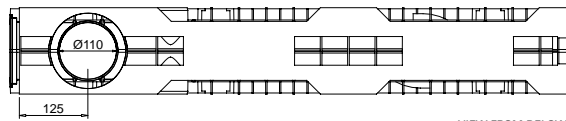


SECTION

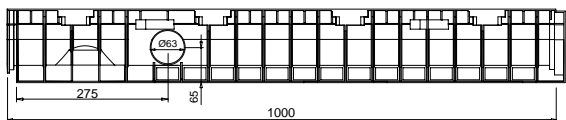


### EASY 100/160

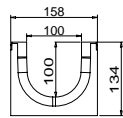
CODE	PRICE	MATERIAL	EXTERNAL DIMENSIONS L x l x h	INTERNAL DIMENSIONS L x l x h	WEIGHT	DRAINAGE SECTION	CAPACITY	PREINSTALLED DRAIN OUTLETS
	€		mm	mm	kg	cm <sup>2</sup>	dm <sup>3</sup>	mm
700000		HD-PE	1000 x 158 x 194	1000 x 100 x 160	2,40	145,28	14,52	side bottom    2 x Ø 110 1 x Ø 110



VIEW FROM BELOW



SIDE VIEW



SECTION



### EASY 100/100

CODE	PRICE	MATERIAL	EXTERNAL DIMENSIONS L x l x h	INTERNAL DIMENSIONS L x l x h	WEIGHT	DRAINAGE SECTION	CAPACITY	PREINSTALLED DRAIN OUTLET
	€		mm	mm	kg	cm <sup>2</sup>	dm <sup>3</sup>	mm
700001		HD-PE	1000 x 158 x 134	1000 x 100 x 100	1,90	89,56	8,95	side bottom    2 x Ø 63 1 x Ø 110

§ Waterproofing: in order to ensure the channels are waterproof, a bituminous adhesive sealant should be used. Heat-sealing the channel joints makes sure there will be no leakages through said joints for a very long time. For further information please contact Mufle's Technical Department.  
N.B. Sizes and weights are subject to usual manufacturing tolerance values.



# GRATINGS



A 15

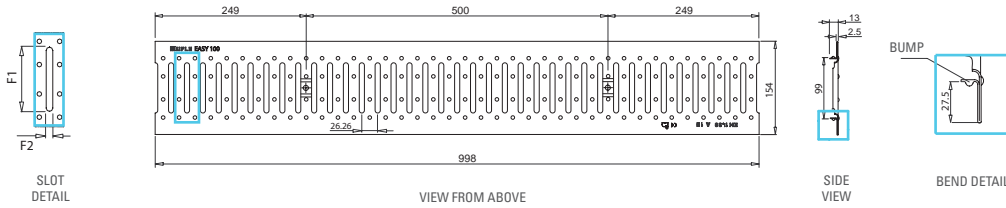
EASY 100

## APPLICATIONS OF GALVANISED STEEL

Green areas and parks  
Pedestrian areas and/or cycle lanes  
Sports facilities  
Terraces

## APPLICATIONS OF STAINLESS STEEL

Green areas and parks  
Pedestrian areas and/or cycle lanes  
Sports facilities  
Terraces  
Kitchens in hospitals, restaurants and similar facilities.



## SLOTTED GRATING



CODE	PRICE €	MATERIAL	DIMENSIONS L x l x h mm	WEIGHT kg	DRAINAGE SURFACE dm <sup>2</sup>	OPENINGS F1 x F2 mm	FIXING SYSTEM	
							tie-rod	no fixing
500109		galvanised steel DX51D**	998 x 154 x 2,5	1,80	2,68	83,0 x 8,5		up to Class C250 as per Standard EN 1433
500111		pickled stainless steel AISI 304*						
500170		galvanised steel DX51D**	498 x 154 x 2,5	0,90	1,34			
500172		pickled stainless steel AISI 304*						

\* Classification according to American Standard ASTM.

\*\* Classification according to Standard EN 10142 (issued in July 2002) and symbolic designation according to EN 10027-1 (-2) (issued in September 1993).

N.B. Sizes and weights are subject to usual manufacturing tolerance values.



# SPECIAL GRATINGS



A 15

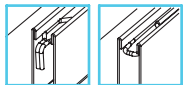
EASY 100

## APPLICATIONS OF GALVANISED STEEL

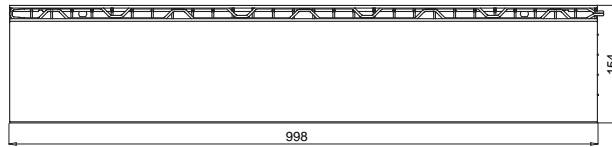
Low visual impact drainage in public and private places

## APPLICATIONS OF STAINLESS STEEL

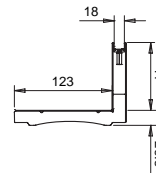
Low visual impact drainage in public and private places



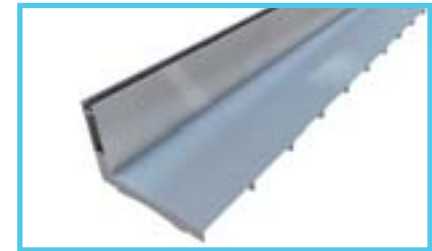
DETAIL OF HOOKING SYSTEM\*\*\*



VIEW FROM ABOVE

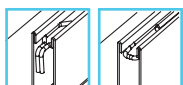


SIDE VIEW

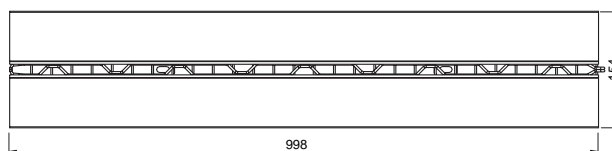


### L-SHAPED GRATING

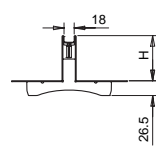
CODE	PRICE €	MATERIAL	DIMENSIONS L x l x h mm	HEIGHT OF SLOTS H mm	WEIGHT kg	DRAINAGE SURFACE dm <sup>2</sup>	OPENINGS F1 x F2 mm
500212		hot dip galvanised steel DD11 (1.0332)**	998 x 154 x 106,5	80	5,10	1,80	998 x 18
on request		pickled stainless steel AISI 304*					
500213		hot dip galvanised steel DD11 (1.0332)**	998 x 154 x 146,5	120	6,30	1,80	
on request		pickled stainless steel AISI 304*					



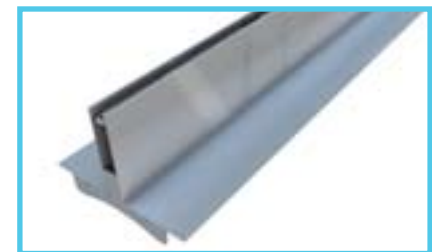
DETAIL OF HOOKING SYSTEM\*\*\*



VIEW FROM ABOVE



SIDE VIEW



### T-SHAPED GRATING

CODE	PRICE €	MATERIAL	DIMENSIONS L x l x h mm	HEIGHT OF SLOTS H mm	WEIGHT kg	DRAINAGE SURFACE dm <sup>2</sup>	OPENINGS F1 x F2 mm
500206		hot dip galvanised steel DD11 (1.0332)**	998 x 154 x 106,5	80	4,80	1,80	998 x 18
on request		pickled stainless steel AISI 304*					
500207		hot dip galvanised steel DD11 (1.0332)**	998 x 154 x 146,5	120	5,90	1,80	
on request		pickled stainless steel AISI 304*					

\* Classification according to American Standard ASTM.

\*\* Classification according to Standard EN 10111 (issued in March 2000) and symbolic designation according to EN 10027-1 (-2) (issued in September 1993).

\*\*\* Hooking System between the gratings through hooks and holes.

N.B. Sizes and weights are subject to usual manufacturing tolerance values.



# GRATINGS



B 125

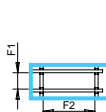
EASY 100

## APPLICATIONS OF GALVANISED STEEL

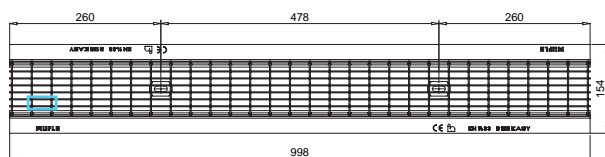
Pavements  
Lay-bys and private car parks

## APPLICATIONS OF STAINLESS STEEL

Pavements  
Lay-bys and private car parks  
Food factories  
Chemically aggressive environments



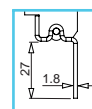
DETAIL OF HOOKING SYSTEM



VIEW FROM ABOVE



SIDE VIEW



DETAIL OF UPRIGHT BEND



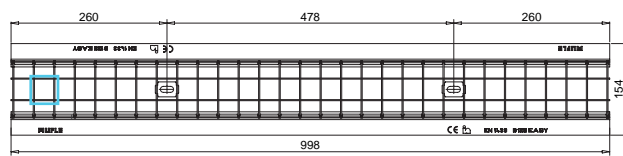
### MESH GRATING (11 x 33)



CODE	PRICE €	MATERIAL	DIMENSIONS L x l x h mm	WEIGHT kg	DRAINAGE SURFACE dm <sup>2</sup>	OPENINGS F1 x F2 mm	FIXING SYSTEM	
							tie-rod	no fixing
500105		hot dip galvanised steel DD11 (1.0332)**	998 x 154 x 1,8	3,90	6,66	10,2 x 32,2		up to Class C250 as per Standard EN 1433
500104		pickled stainless steel AISI 304*						
500166		hot dip galvanised steel DD11 (1.0332)**	498 x 154 x 1,8	1,95	3,33			
500165		pickled stainless steel AISI 304*						



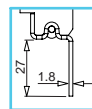
DETAIL OF SQUARE MESH



VIEW FROM ABOVE



SIDE VIEW



DETAIL OF UPRIGHT BEND



### MESH GRATING (33 x 33)



CODE	PRICE €	MATERIAL	DIMENSIONS L x l x h mm	WEIGHT kg	DRAINAGE SURFACE dm <sup>2</sup>	OPENINGS F1 x F2 mm	FIXING SYSTEM	
							tie-rod	no fixing
500106		hot dip galvanised steel DD11 (1.0332)**	998 x 154 x 1,8	3,30	9,50	34,2 x 32,2		up to Class C250 as per Standard EN 1433
500108		pickled stainless steel AISI 304*						
500167		hot dip galvanised steel DD11 (1.0332)**	498 x 154 x 1,8	1,65	4,75			
500169		pickled stainless steel AISI 304*						

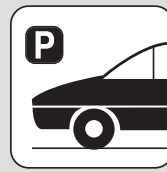
\* Classification according to American Standard ASTM.

\*\* Classification according to Standard EN 10111 (issued in March 2000) and symbolic designation according to EN 10027-1 (-2) (issued in September 1993).

N.B. Sizes and weights are subject to usual manufacturing tolerance values.



# GRATINGS



B 125

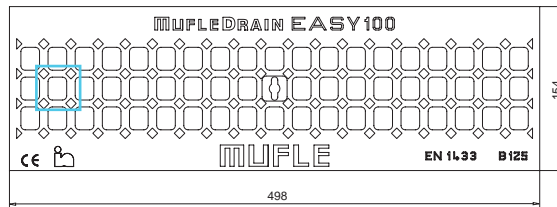
EASY 100

## APPLICATIONS OF DUCTILE IRON

Pavements  
Lay-bys and private car parks



SLOT  
DETAIL



VIEW FROM ABOVE




SIDE  
VIEW



### MESH GRATING

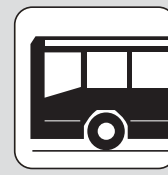


CODE	PRICE €	MATERIAL	DIMENSIONS L x l x h mm	WEIGHT kg	DRAINAGE SURFACE dm <sup>2</sup>	OPENINGS F1 x F2 mm	FIXING SYSTEM tie-rod no fixing
500143		GJS 500/7* ductile iron water based paint coated	498 x 154 x 7	3,00	2,15	21,5 x 17,5	 up to Class C250 as per Standard EN 1433

\* Classification according to Standard EN 1563 (issued in March 2004).  
N.B. Sizes and weights are subject to usual manufacturing tolerance values.



# GRATINGS

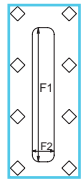


C 250

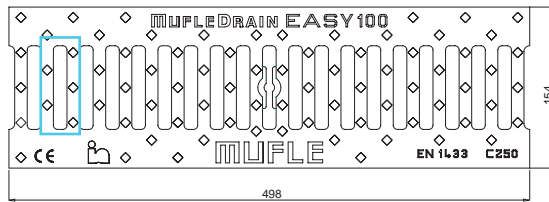
EASY 100

## APPLICATIONS OF DUCTILE IRON

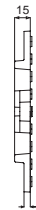
- Kerbs
- Historical town centres (slow traffic)
- Parking areas
- Parking decks



SLOT  
DETAIL



VIEW FROM ABOVE




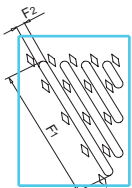
SIDE  
VIEW



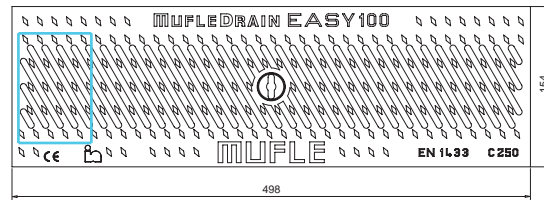
### SLOTTED GRATING 13 mm



CODE	PRICE €	MATERIAL	DIMENSIONS L x l x h mm	WEIGHT kg	DRAINAGE SURFACE dm <sup>2</sup>	OPENINGS F1 x F2 mm	FIXING SYSTEM	
							tie-rod	no fixing
500144		GJS 500/7* ductile iron water based paint coated	498 x 154 x 7	4,20	2,10	80,0 x 13,0		up to Class C250 as per Standard EN 1433



SLOT  
DETAIL



VIEW FROM ABOVE




SIDE  
VIEW



### SLOTTED GRATING 6 mm



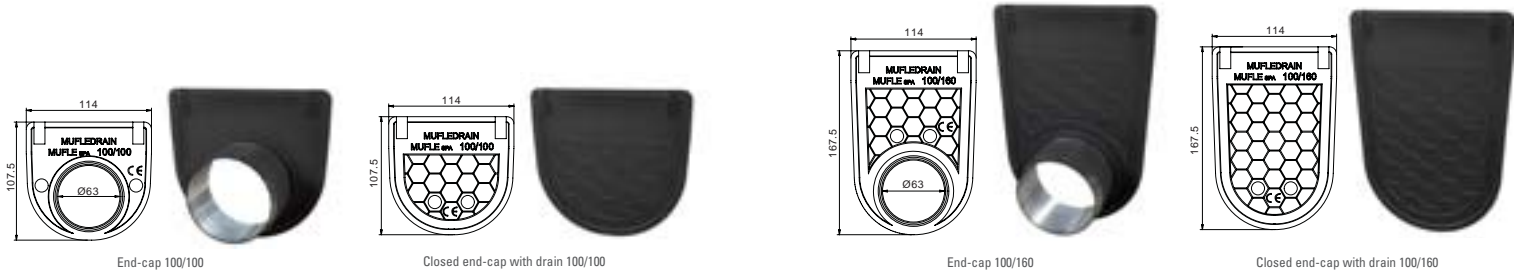
CODE	PRICE €	MATERIAL	DIMENSIONS L x l x h mm	WEIGHT kg	DRAINAGE SURFACE dm <sup>2</sup>	OPENINGS F1 x F2 mm	FIXING SYSTEM	
							tie-rod	no fixing
500146		GJS 500/7* ductile iron water based paint coated	498 x 154 x 7	3,90	1,90	91,5 x 6,0		up to Class C250 as per Standard EN 1433

\* Classification according to Standard EN 1563 (issued in March 2004).  
N.B. Sizes and weights are subject to usual manufacturing tolerance values.



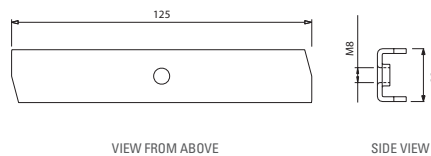
# ACCESSORIES

EASY 100



## END CAPS

CODE	PRICE	TYPE	MATERIAL	VALID FOR CHANNELS	PREINSTALLED DRAINS
	€				mm
700502		end-cap with drain	HD-PE	100/100	1 x Ø 63
700510		closed end-cap	HD-PE	100/100	-
700503		end-cap with drain	HD-PE	100/160	1 x Ø 63
700511		closed end-cap	HD-PE	100/160	-



## KIT TIE-ROD + SCREWS

CODE	PRICE	MATERIAL	VALID FOR GRATINGS	SCREW	KIT FOR 1 ml
	€				
500412		galvanised steel	EASY galvanised steel	M8 x 40 TBL combi	2 tie-rods + 2 screws
500413		stainless steel	EASY stainless steel	M8 x 40 TBL combi stainless steel	2 tie-rods + 2 screws
500414		black galvanised steel	EASY ductile iron	M8 x 40 black with hexagonal head	2 tie-rods + 2 screws

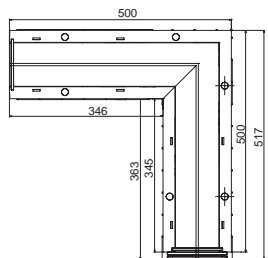
N.B. Sizes and weights are subject to usual manufacturing tolerance values.



# SPECIAL PIECES AND DRAIN BOX WITH SYPHON

EASY 100

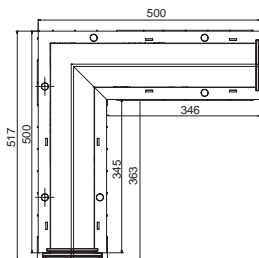
## LEFT CORNER



## EASY 100

CODE	PRICE €	MODEL
700100		100/160
700101		100/100

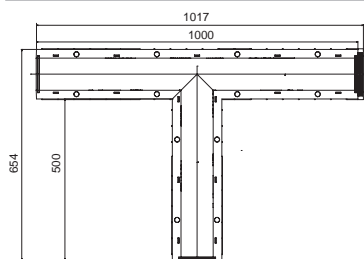
## RIGHT CORNER



## EASY 100

CODE	PRICE €	MODEL
700106		100/160
700107		100/100

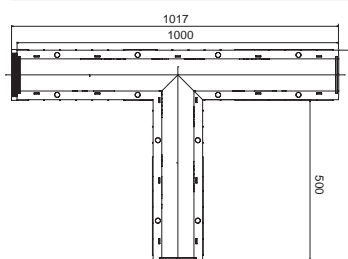
## LEFT TI



## EASY 100

CODE	PRICE €	MODEL
700112		100/160
700113		100/100

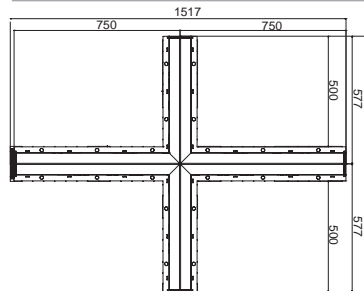
## RIGHT TI



## EASY 100

CODE	PRICE €	MODEL
700118		100/160
700119		100/100

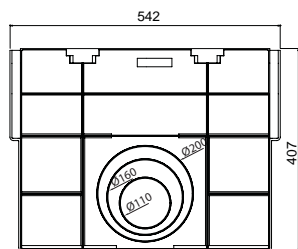
## CROSS



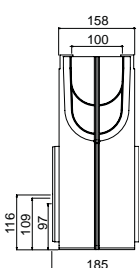
## EASY 100

CODE	PRICE €	MODEL
700124		100/160
700125		100/100

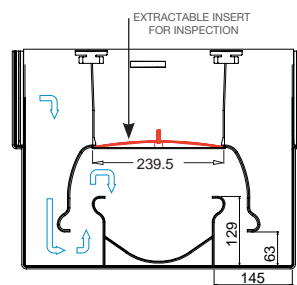
## DRAIN BOX WITH SYPHON



FRONT VIEW



SIDE VIEW



SECTION

## EASY 100

CODE	PRICE €	MATERIAL	EXTERNAL DIMENSIONS L x l x h mm	INTERNAL DIMENSIONS L x l x h mm	MAXIMUM LARGE mm	HEIGHT OF OUTLETS mm	WEIGHT kg	PREINSTALLED DRAIN OUTLETS mm
700008		HD-PE	542 x 158 x 407	500 x 100 x 400	185	116 - 109 - 97	2,50	2 x Ø 110; 2 x Ø 160; 2 x Ø 200

N.B. Sizes and weights are subject to usual manufacturing tolerance values.

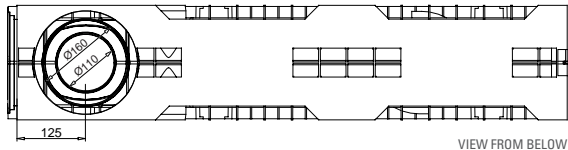


# 150

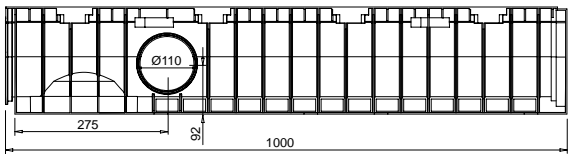


# CHANNELS

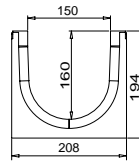
## EASY 150



VIEW FROM BELOW



SIDE VIEW

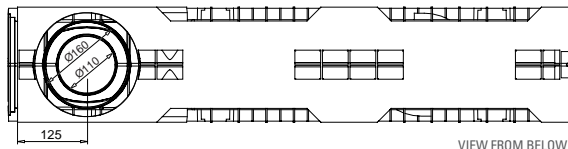


SECTION

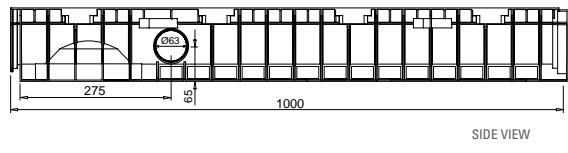


### EASY 150/160

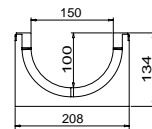
CODE	PRICE	MATERIAL	EXTERNAL DIMENSIONS L x l x h	INTERNAL DIMENSIONS L x l x h	WEIGHT	DRAINAGE SECTION	CAPACITY	PREINSTALLED DRAIN OUTLET
	€		mm	mm	kg	cm <sup>2</sup>	dm <sup>3</sup>	mm
700002		HD-PE	1000 x 208 x 194	1000 x 150 x 160	2,85	213,04	21,30	side 2 x Ø 110 bottom 1 x Ø 110 ; 1 x Ø 160



VIEW FROM BELOW



SIDE VIEW



SECTION



### EASY 150/100

CODE	PRICE	MATERIAL	EXTERNAL DIMENSIONS L x l x h	INTERNAL DIMENSIONS L x l x h	WEIGHT	DRAINAGE SECTION	CAPACITY	PREINSTALLED DRAIN OUTLET
	€		mm	mm	kg	cm <sup>2</sup>	dm <sup>3</sup>	mm
700003		HD-PE	1000 x 208 x 134	1000 x 150 x 100	2,30	127,32	12,73	side 2 x Ø 63 bottom 1 x Ø 110 ; 1 x Ø 160

§ Waterproofing: in order to ensure the channels are waterproof, a bituminous adhesive sealant should be used. Heat-sealing the channel joints makes sure there will be no leakages through said joints for a very long time. For further information please contact Mufle's Technical Department.  
N.B. Sizes and weights are subject to usual manufacturing tolerance values.



# GRATINGS



A 15

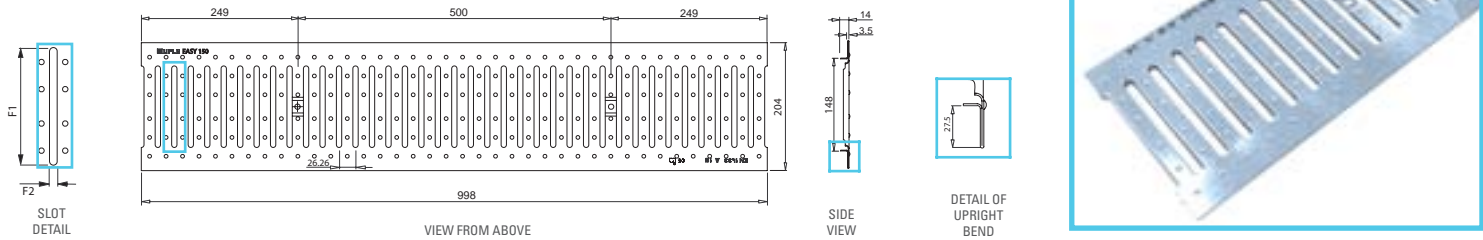
EASY 150


## APPLICATIONS OF GALVANISED STEEL

Green areas and parks  
Pedestrian areas and/or cycle lanes  
Sports facilities  
Terraces

## APPLICATIONS OF STAINLESS STEEL

Green areas and parks  
Pedestrian areas and/or cycle lanes  
Sports facilities  
Terraces  
Kitchens in hospitals, restaurants and similar facilities.



SLOTTED GRATING							
CODE	PRICE €	MATERIAL	DIMENSIONS L x l x h mm	WEIGHT kg	DRAINAGE SURFACE dm <sup>2</sup>	OPENINGS F1 x F2 mm	FIXING SYSTEM tie-rod no fixing
500123		galvanised steel DX51D**	998 x 204 x 3,5	3,30	4,20	130,0 x 8,5	
500124		pickled stainless steel AISI 304*					
500184		galvanised steel DX51D**	498 x 204 x 3,5	1,65	2,10		
500185		pickled stainless steel AISI 304*					

\* Classification according to American Standard ASTM.

\*\* Classification according to Standard EN 10142 (issued in July 2002) and symbolic designation according to EN 10027-1 (-2) (issued in September 1993).

N.B. Sizes and weights are subject to usual manufacturing tolerance values.



# SPECIAL GRATINGS



A 15

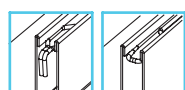
EASY 150

## APPLICATIONS OF GALVANISED STEEL

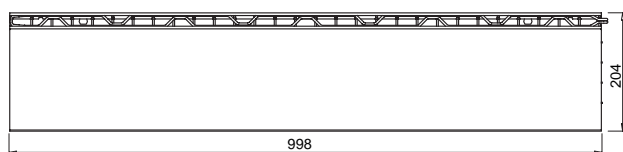
Low visual impact drainage in public and private places

## APPLICATIONS OF STAINLESS STEEL

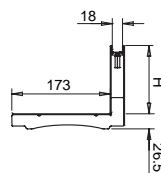
Low visual impact drainage in public and private places



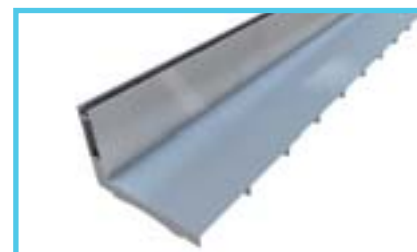
DETAIL OF HOOKING SYSTEM\*\*\*



VIEW FROM ABOVE

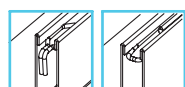


SIDE VIEW

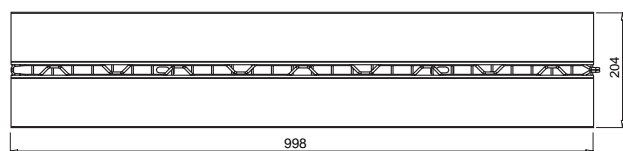


### L-SHAPED GRATING

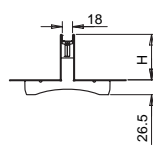
CODE	PRICE €	MATERIAL	DIMENSIONS L x l x h mm	HEIGHT OF SLOTS H mm	WEIGHT kg	DRAINAGE SURFACE dm <sup>2</sup>	OPENINGS F1 x F2 mm
500214		hot dip galvanised steel DD11 (1.0332)**	998 x 204 x 106,5	80	5,90	1,80	998 x 18
on request		pickled stainless steel AISI 304*					
500215		hot dip galvanised steel DD11 (1.0332)**	998 x 204 x 146,5	120	6,90	1,80	
on request		pickled stainless steel AISI 304*					



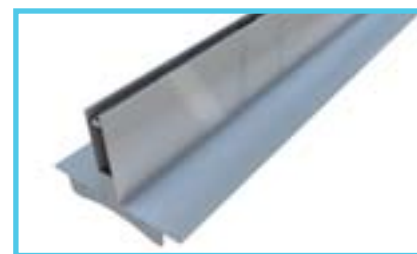
DETAIL OF HOOKING SYSTEM\*\*\*



VIEW FROM ABOVE



SIDE VIEW



### T-SHAPED GRATING

CODE	PRICE €	MATERIAL	DIMENSIONS L x l x h mm	HEIGHT OF SLOTS H mm	WEIGHT kg	DRAINAGE SURFACE dm <sup>2</sup>	OPENINGS F1 x F2 mm
500208		hot dip galvanised steel DD11 (1.0332)**	998 x 204 x 106,5	80	5,60	1,80	998 x 18
on request		pickled stainless steel AISI 304*					
500209		hot dip galvanised steel DD11 (1.0332)**	998 x 204 x 146,5	120	6,60	1,80	
on request		pickled stainless steel AISI 304*					

\* Classification according to American Standard ASTM.

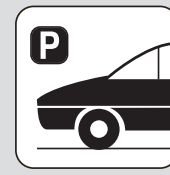
\*\* Classification according to Standard EN 10111 (issued in March 2000) and symbolic designation according to EN 10027-1 (-2) (issued in September 1993).

\*\*\* Hooking System between the gratings through hooks and holes.

N.B. Sizes and weights are subject to usual manufacturing tolerance values.



# GRATINGS



B 125

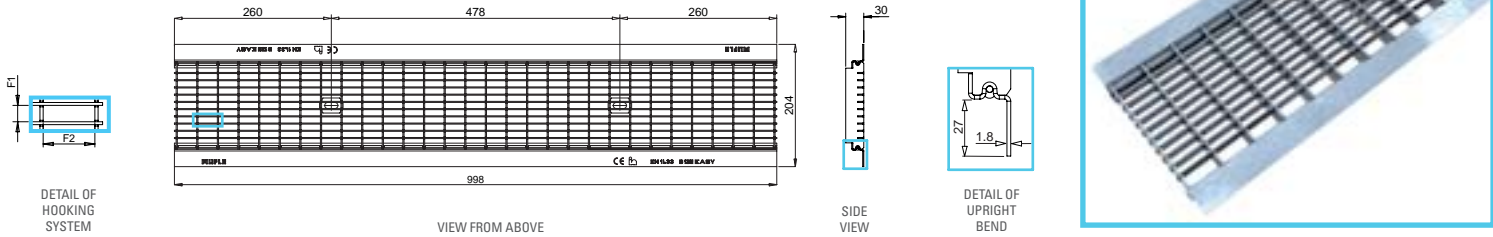
EASY 150

## APPLICATIONS OF GALVANISED STEEL

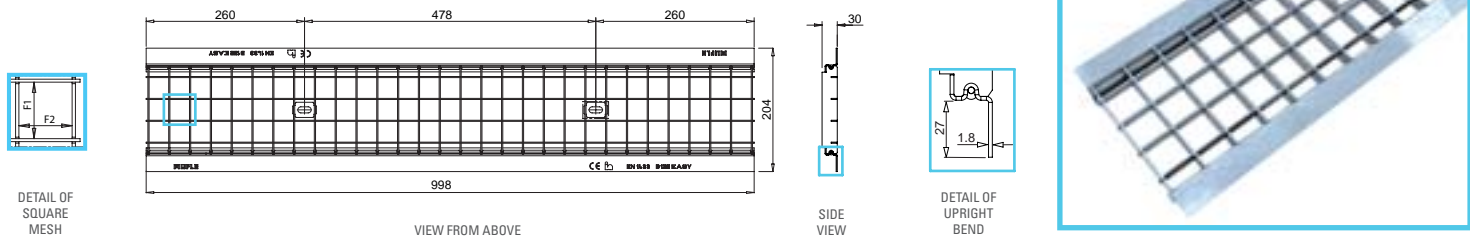
Pavements  
Lay-bys and private car parks

## APPLICATIONS OF STAINLESS STEEL

Pavements  
Lay-bys and private car parks  
Food factories  
Chemically aggressive environments



MESH GRATING (11 x 33)									
CODE	PRICE €	MATERIAL	DIMENSIONS L x l x h mm	WEIGHT kg	DRAINAGE SURFACE dm <sup>2</sup>	OPENINGS F1 x F2 mm	FIXING SYSTEM		
							tie-rod	no fixing	
500117		hot dip galvanised steel DD11 (1.0332)**	998 x 204 x 1,8	5,40	10,50	10,2 x 32,2		up to Class C250 as per Standard EN 1433	
500119		pickled stainless steel AISI 304*							
500178		hot dip galvanised steel DD11 (1.0332)**	498 x 204 x 1,8	2,70	5,25				
500180		pickled stainless steel AISI 304*							



MESH GRATING (33 x 33)									
CODE	PRICE €	MATERIAL	DIMENSIONS L x l x h mm	WEIGHT kg	DRAINAGE SURFACE dm <sup>2</sup>	OPENINGS F1 x F2 mm	FIXING SYSTEM		
							tie-rod	no fixing	
500120		hot dip galvanised steel DD11 (1.0332)**	998 x 204 x 1,8	4,60	12,77	34,2 x 32,2		up to Class C250 as per Standard EN 1433	
500122		pickled stainless steel AISI 304*							
500181		hot dip galvanised steel DD11 (1.0332)**	498 x 204 x 1,8	2,30	6,38				
500183		pickled stainless steel AISI 304*							

\* Classification according to American Standard ASTM.

\*\* Classification according to Standard EN 10111 (issued in March 2000) and symbolic designation according to EN 10027-1 (-2) (issued in September 1993).

N.B. Sizes and weights are subject to usual manufacturing tolerance values.



# GRATINGS



B 125

EASY 150

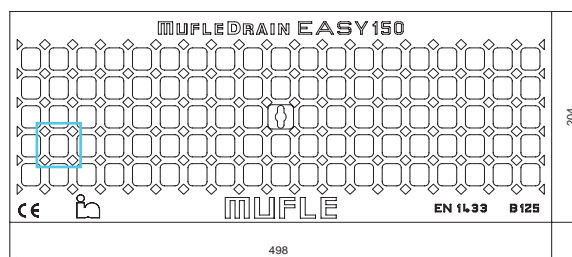
## APPLICATIONS OF DUCTILE IRON

Pavements

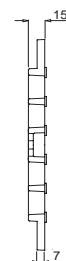
Lay-bys and private car parks



SLOT  
DETAIL



VIEW FROM ABOVE




SIDE  
VIEW



### MESH GRATING

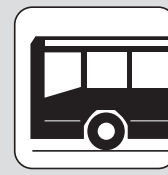


CODE	PRICE €	MATERIAL	DIMENSIONS L x l x h mm	WEIGHT kg	DRAINAGE SURFACE dm <sup>2</sup>	OPENINGS F1 x F2 mm	FIXING SYSTEM	
							tie-rod	no fixing
500149		GJS 500/7* ductile iron water based paint coated	498 x 204 x 7	4,70	3,58	21,5 x 17,5		up to Class C250 as per Standard EN 1433

\* Classification according to Standard EN 1563 (issued in March 2004).  
N.B. Sizes and weights are subject to usual manufacturing tolerance values.



# GRATINGS

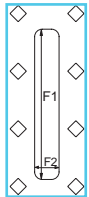


C 250

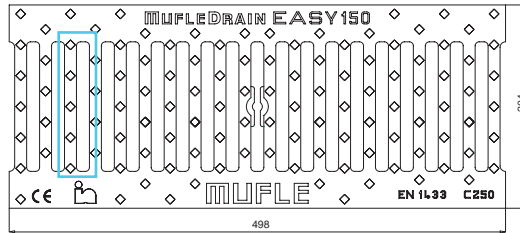
EASY 150

## APPLICATIONS OF DUCTILE IRON

- Kerbs
- Historical town centres (slow traffic)
- Parking areas
- Parking decks



SLOT  
DETAIL



VIEW FROM ABOVE




SIDE  
VIEW



### SLOTTED GRATING 13 mm



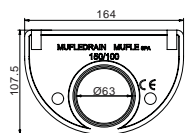
CODE	PRICE €	MATERIAL	DIMENSIONS L x l x h mm	WEIGHT kg	DRAINAGE SURFACE dm <sup>2</sup>	OPENINGS F1 x F2 mm	FIXING SYSTEM	
							tie-rod	no fixing
500151		GJS 500/7* ductile iron water based paint coated	498 x 204 x 7	5,50	3,38	130,0 x 13,0		up to Class C250 as per Standard EN 1433

\* Classification according to Standard EN 1563 (issued in March 2004).  
N.B. Sizes and weights are subject to usual manufacturing tolerance values.

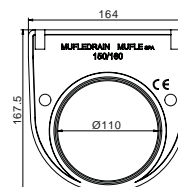


# ACCESSORIES

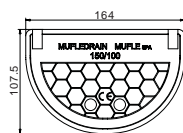
# EASY 150



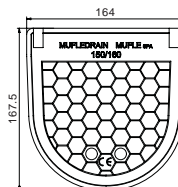
End-cap 150/100



End-cap 150/160



Closed end-cap with drain 150/100

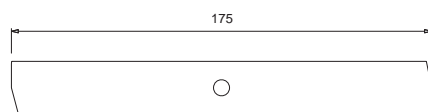


Closed end-cap with drain 150/160

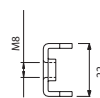


## END CAPS

CODE	PRICE	TYPE	MATERIAL	VALID FOR CHANNELS	PREINSTALLED DRAINS
	€				mm
700504		end-cap with drain	HD-PE	150/100	1 x Ø 63
700512		closed end-cap	HD-PE	150/100	-
700505		end-cap with drain	HD-PE	150/160	1 x Ø 110
700513		closed end-cap	HD-PE	150/160	-



VIEW FROM ABOVE



SIDE VIEW



## KIT TIE-ROD + SCREWS

CODE	PRICE	MATERIAL	VALID FOR GRATINGS	SCREW	KIT FOR 1 ml
	€				
500415		galvanised steel	EASY galvanised steel	M8 x 40 TBL combi	2 tie-rods + 2 screws
500416		stainless steel	EASY stainless steel	M8 x 40 TBL combi	2 tie-rods + 2 screws
500417		black galvanised steel	EASY ductile iron	M8 x 40 black with hexagonal head	2 tie-rods + 2 screws

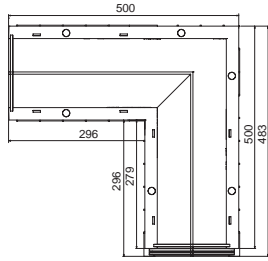
N.B. Sizes and weights are subject to usual manufacturing tolerance values.



# SPECIAL PIECES AND DRAIN BOX WITH SYPHON

EASY 150

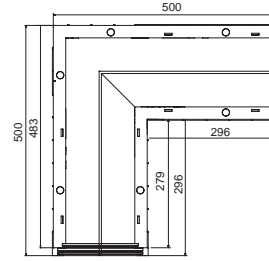
## LEFT CORNER



## EASY 150

CODE	PRICE €	MODEL
700102		150/160
700103		150/100

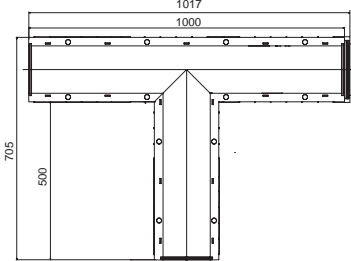
## RIGHT CORNER



## EASY 150

CODE	PRICE €	MODEL
700108		150/160
700109		150/100

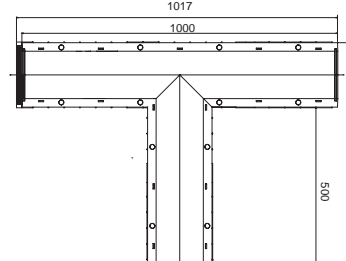
## LEFT TI



## EASY 150

CODE	PRICE €	MODEL
700114		150/160
700115		150/100

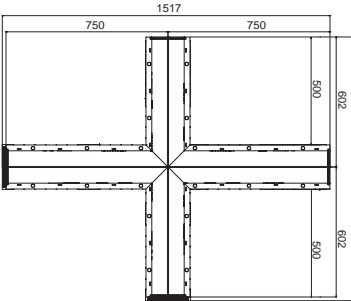
## RIGHT TI



## EASY 150

CODE	PRICE €	MODEL
700120		150/160
700121		150/100

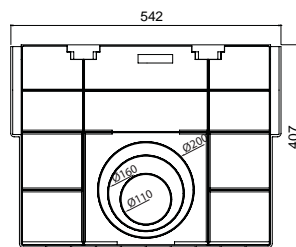
## CROSS



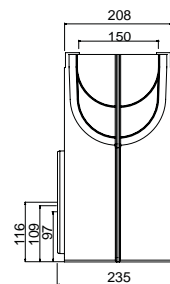
## EASY 150

CODE	PRICE €	MODEL
700126		150/160
700127		150/100

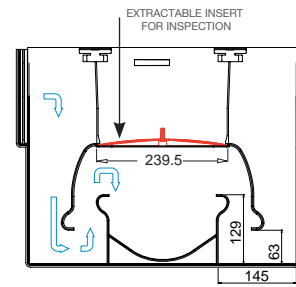
## DRAIN BOX WITH SYPHON



FRONT VIEW



SIDE VIEW



SECTION

## EASY 150

CODE	PRICE €	MATERIAL	EXTERNAL DIMENSIONS L x l x h mm	INTERNAL DIMENSIONS L x l x h mm	MAXIMUM LARGE mm	HEIGHT OF OUTLETS mm	WEIGHT kg	PREINSTALLED DRAIN OUTLETS mm
700009		HD-PE	542 x 208 x 407	500 x 150 x 400	235	116 - 109 - 97	2,78	2 x Ø 110; 2 x Ø 160; 2 x Ø 200

N.B. Sizes and weights are subject to usual manufacturing tolerance values.

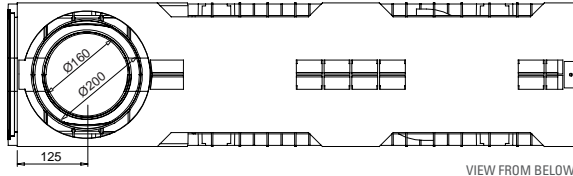


200

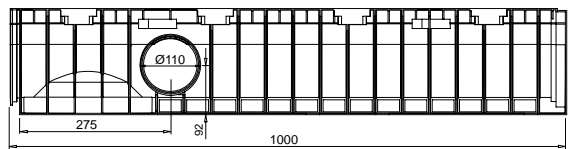


# CHANNELS

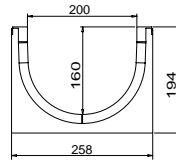
## EASY 200



VIEW FROM BELOW



SIDE VIEW

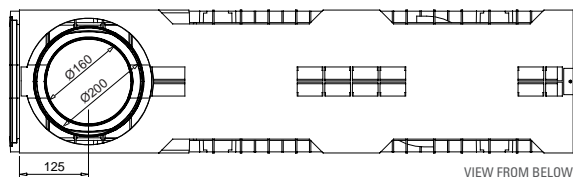


SECTION

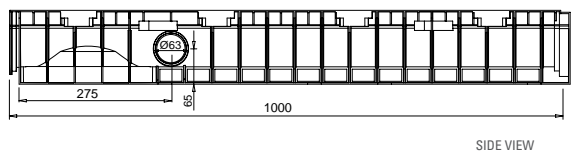


### EASY 200/160

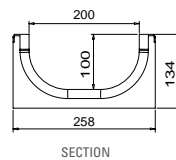
CODE	PRICE	MATERIAL	EXTERNAL DIMENSIONS L x l x h	INTERNAL DIMENSIONS L x l x h	WEIGHT	DRAINAGE SECTION	CAPACITY	PREINSTALLED DRAIN OUTLET
	€		mm	mm	kg	cm <sup>2</sup>	dm <sup>3</sup>	mm
700004		HD-PE	1000 x 258 x 194	1000 x 200 x 160	3,25	275,87	27,58	side 2 x Ø 110 bottom 1 x Ø 200 ; 1 x Ø 160



VIEW FROM BELOW



SIDE VIEW



SECTION



### EASY 200/100

CODE	PRICE	MATERIAL	EXTERNAL DIMENSIONS L x l x h	INTERNAL DIMENSIONS L x l x h	WEIGHT	DRAINAGE SECTION	CAPACITY	PREINSTALLED DRAIN OUTLET
	€		mm	mm	kg	cm <sup>2</sup>	dm <sup>3</sup>	mm
700005		HD-PE	1000 x 258 x 134	1000 x 200 x 100	2,65	178,73	17,87	side 2 x Ø 63 bottom 1 x Ø 200 ; 1 x Ø 160

§ Waterproofing: in order to ensure the channels are waterproof, a bituminous adhesive sealant should be used. Heat-sealing the channel joints makes sure there will be no leakages through said joints for a very long time. For further information please contact Mufle's Technical Department.  
N.B. Sizes and weights are subject to usual manufacturing tolerance values.



# GRATINGS

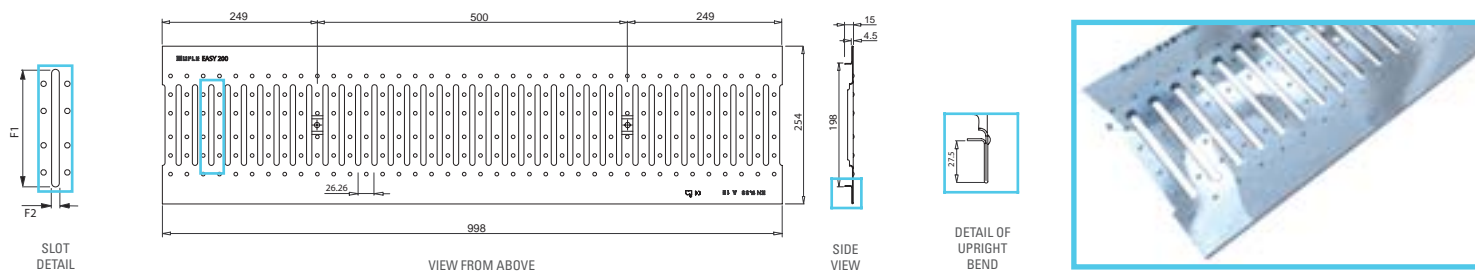




A 15

EASY 200

## APPLICATIONS OF GALVANISED STEEL

- Green areas and parks
- Pedestrian areas and/or cycle lanes
- Sports facilities
- Terraces



SLOTTED GRATING									
CODE	PRICE €	MATERIAL	DIMENSIONS L x l x h mm	WEIGHT kg	DRAINAGE SURFACE dm <sup>2</sup>	OPENINGS F1 x F2 mm	FIXING SYSTEM		
							tie-rod	no fixing	
500135		galvanised steel DX51D**	998 x 254 x 4,5	5,20	4,20	130,0 x 8,5		up to Class C250 as per Standard EN 1433	
500196		galvanised steel DX51D**	498 x 254 x 4,5	2,60	2,10				

\*\* Classification according to Standard EN 10142 (issued in July 2002) and symbolic designation according to EN 10027-1 (-2) (issued in September 1993).  
N.B. Sizes and weights are subject to usual manufacturing tolerance values.



# SPECIAL GRATINGS



A 15

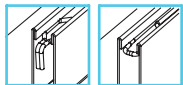
EASY 200

## APPLICATIONS OF GALVANISED STEEL

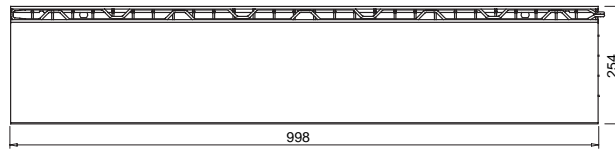
Low visual impact drainage in public and private places

## APPLICATIONS OF STAINLESS STEEL

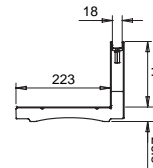
Low visual impact drainage in public and private places



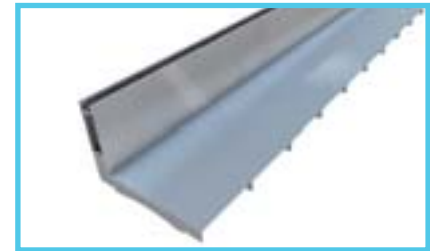
DETAIL OF HOOKING SYSTEM\*\*\*



VIEW FROM ABOVE

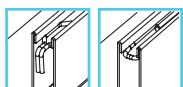


SIDE VIEW

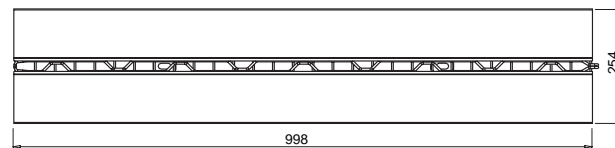


### L-SHAPED GRATING

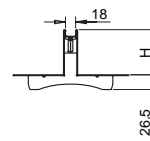
CODE	PRICE €	MATERIAL	DIMENSIONS L x l x h mm	HEIGHT OF SLOTS H mm	WEIGHT kg	DRAINAGE SURFACE dm <sup>2</sup>	OPENINGS F1 x F2 mm
500216		hot dip galvanised steel DD11 (1.0332)**	998 x 254 x 106,5	80	6,70	1,80	998 x 18
on request		pickled stainless steel AISI 304*					
500217		hot dip galvanised steel DD11 (1.0332)**	998 x 254 x 146,5	120	7,70	1,80	
on request		pickled stainless steel AISI 304*					



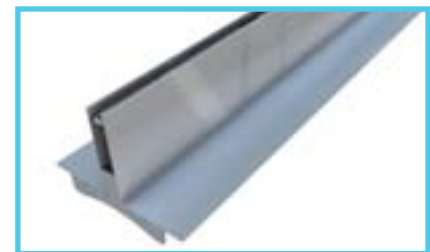
DETAIL OF HOOKING SYSTEM\*\*\*



VIEW FROM ABOVE



SIDE VIEW



### T-SHAPED GRATING

CODE	PRICE €	MATERIAL	DIMENSIONS L x l x h mm	HEIGHT OF SLOTS H mm	WEIGHT kg	DRAINAGE SURFACE dm <sup>2</sup>	OPENINGS F1 x F2 mm
500210		hot dip galvanised steel DD11 (1.0332)**	998 x 254 x 106,5	80	6,30	1,80	998 x 18
on request		pickled stainless steel AISI 304*					
500211		hot dip galvanised steel DD11 (1.0332)**	998 x 254 x 146,5	120	7,40	1,80	
on request		pickled stainless steel AISI 304*					

\* Classification according to American Standard ASTM.

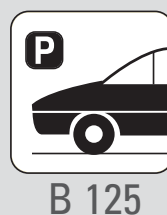
\*\* Classification according to Standard EN 10111 (issued in March 2000) and symbolic designation according to EN 10027-1 (-2) (issued in September 1993).

\*\*\* Hooking System between the gratings through hooks and holes.

N.B. Sizes and weights are subject to usual manufacturing tolerance values.



# GRATINGS



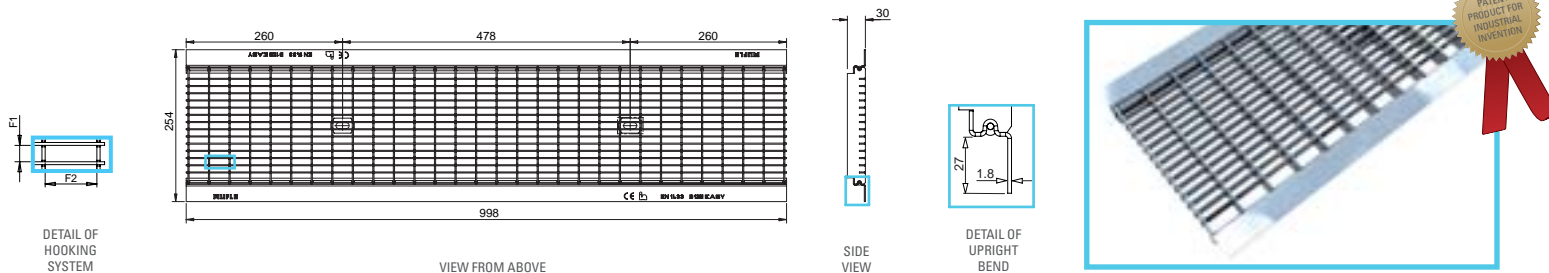
EASY 200

## APPLICATIONS OF GALVANISED STEEL

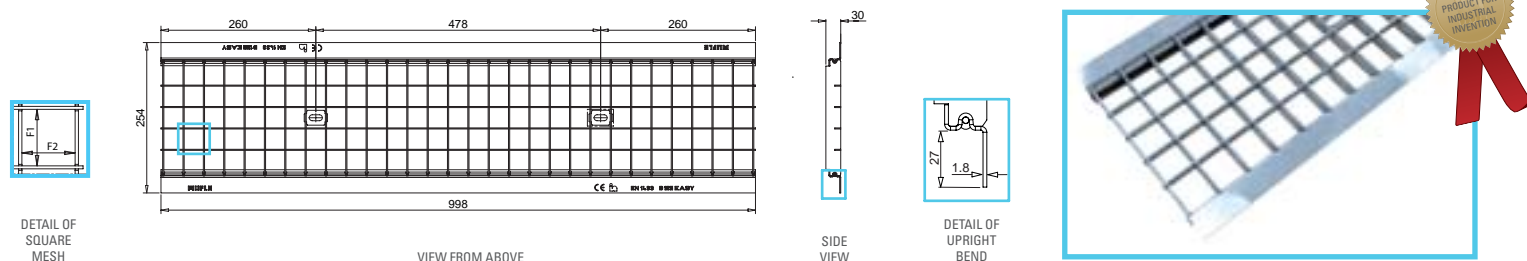
Pavements  
Lay-bys and private car parks

## APPLICATIONS OF STAINLESS STEEL

Pavements  
Lay-bys and private car parks  
Food factories  
Chemically aggressive environments



MESH GRATING (11 x 33)									
CODE	PRICE €	MATERIAL	DIMENSIONS L x l x h mm	WEIGHT kg	DRAINAGE SURFACE dm <sup>2</sup>	OPENINGS F1 x F2 mm	FIXING SYSTEM		
							tie-rod	no fixing	
500131		hot dip galvanised steel DD11 (1.0332)**	998 x 254 x 1,8	6,60	14,00	10,2 x 32,2		up to Class C250 as per Standard EN 1433	
500132		pickled stainless steel AISI 304*							
500192		hot dip galvanised steel DD11 (1.0332)**	498 x 254 x 1,8	3,30	7,00				
500193		pickled stainless steel AISI 304*							



MESH GRATING (33 x 33)									
CODE	PRICE €	MATERIAL	DIMENSIONS L x l x h mm	WEIGHT kg	DRAINAGE SURFACE dm <sup>2</sup>	OPENINGS F1 x F2 mm	FIXING SYSTEM		
							tie-rod	no fixing	
500133		hot dip galvanised steel DD11 (1.0332)**	998 x 254 x 1,8	5,20	16,00	34,2 x 32,2		up to Class C250 as per Standard EN 1433	
500134		pickled stainless steel AISI 304*							
500194		hot dip galvanised steel DD11 (1.0332)**	498 x 254 x 1,8	2,60	8,00				
500195		pickled stainless steel AISI 304*							

\* Classification according to American Standard ASTM.

\*\* Classification according to Standard EN 10111 (issued in March 2000) and symbolic designation according to EN 10027-1 (-2) (issued in September 1993).

N.B. Sizes and weights are subject to usual manufacturing tolerance values.



# GRATINGS



B 125

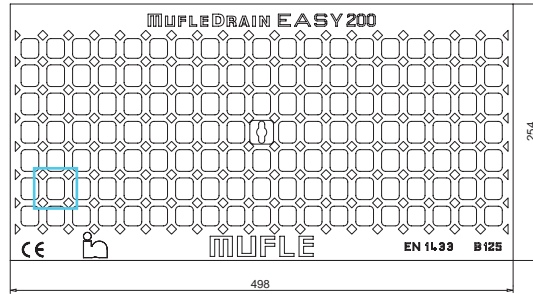
EASY 200

## APPLICATIONS OF DUCTILE IRON

Pavements  
Lay-bys and private car parks



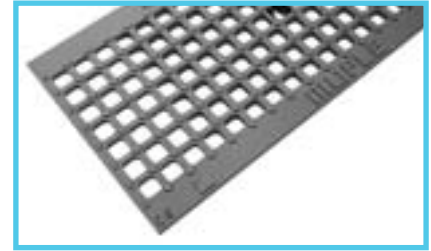
SLOT  
DETAIL





VIEW FROM ABOVE



SIDE  
VIEW



MESH GRATING								 15 mm	
CODE	PRICE €	MATERIAL	DIMENSIONS L x l x h mm	WEIGHT kg	DRAINAGE SURFACE dm <sup>2</sup>	OPENINGS F1 x F2 mm	FIXING SYSTEM		
							tie-rod	no fixing	
500154		GJS 500/7* ductile iron water based paint coated	498 x 254 x 7	5,85	5,00	21,5 x 17,5	 up to Class C250 as per Standard EN 1433		

\* Classification according to Standard EN 1563 (issued in March 2004).  
N.B. Sizes and weights are subject to usual manufacturing tolerance values.



# GRATINGS

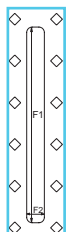


C 250

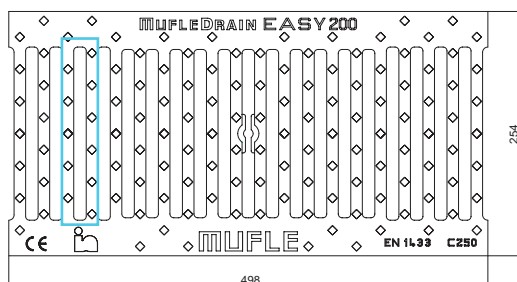
EASY 200

## APPLICATIONS OF DUCTILE IRON

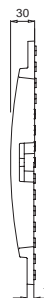
- Kerbs
- Historical town centres (slow traffic)
- Parking areas
- Parking decks



SLOT  
DETAIL



VIEW FROM ABOVE




SIDE  
VIEW



### SLOTTED GRATING 13 mm



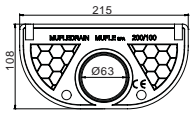
CODE	PRICE €	MATERIAL	DIMENSIONS L x l x h mm	WEIGHT kg	DRAINAGE SURFACE dm <sup>2</sup>	OPENINGS F1 x F2 mm	FIXING SYSTEM	
							tie-rod	no fixing
500155		GJS 500/7* ductile iron water based paint coated	498 x 254 x 7	7,20	4,68	180,0 x 13,0		up to Class C250 as per Standard EN 1433

\* Classification according to Standard EN 1563 (issued in March 2004).  
N.B. Sizes and weights are subject to usual manufacturing tolerance values.

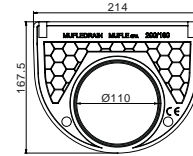


# ACCESSORIES

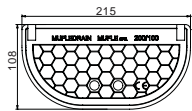
# EASY 200



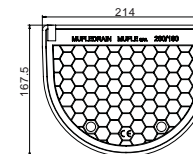
End-cap 200/100



End-cap 200/160



Closed end-cap with drain 200/100

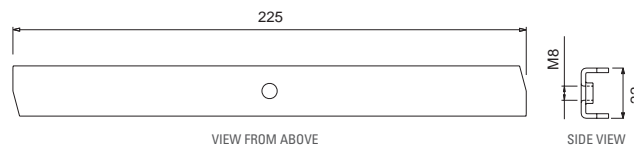


Closed end-cap with drain 200/160



## END CAPS

CODE	PRICE	TYPE	MATERIAL	VALID FOR CHANNELS	PREINSTALLED DRAINS
	€				mm
700506		end-cap with drain	HD-PE	200/100	1 x Ø 63
700514		closed end-cap	HD-PE	200/100	-
700507		end-cap with drain	HD-PE	200/160	1 x Ø 110
700515		closed end-cap	HD-PE	200/160	-



## KIT TIE-ROD + SCREWS

CODE	PRICE	MATERIAL	VALID FOR GRATINGS	SCREW	KIT FOR 1 m
	€				
500418		galvanised steel	EASY galvanised steel	M8 x 40 TBL combi	2 tie-rods + 2 screws
500419		stainless steel	EASY stainless steel	M8 x 40 TBL combi	2 tie-rods + 2 screws
500420		black galvanised steel	EASY ductile iron	M8 x 40 black with hexagonal head	2 tie-rods + 2 screws

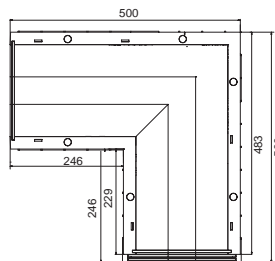
N.B. Sizes and weights are subject to usual manufacturing tolerance values.



# SPECIAL PIECES AND DRAIN BOX WITH SYPHON

EASY 200

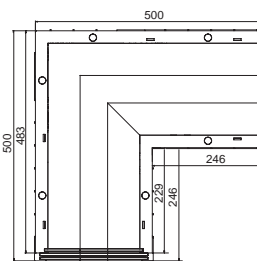
## LEFT CORNER



## EASY 200

CODE	PRICE €	MODEL
700104		200/160
700105		200/100

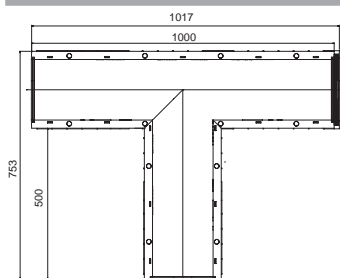
## RIGHT CORNER



## EASY 200

CODE	PRICE €	MODEL
700110		200/160
700111		200/100

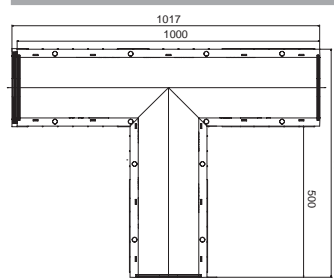
## LEFT TI



## EASY 200

CODE	PRICE €	MODEL
700116		200/160
700117		200/100

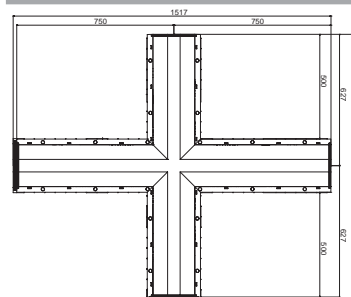
## RIGHT TI



## EASY 200

CODE	PRICE €	MODEL
700122		200/160
700123		200/100

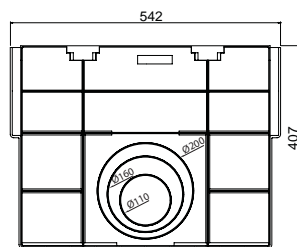
## CROSS



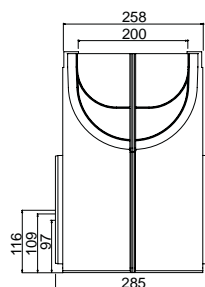
## EASY 200

CODE	PRICE €	MODEL
700128		200/160
700129		200/100

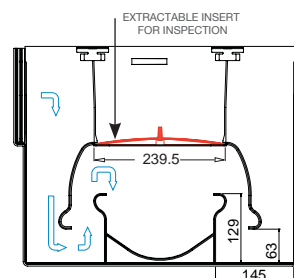
## DRAIN BOX WITH SYPHON



FRONT VIEW



SIDE VIEW



SECTION

## EASY 200

CODE	PRICE €	MATERIAL	EXTERNAL DIMENSIONS L x l x h mm	INTERNAL DIMENSIONS L x l x h mm	MAXIMUM LARGE mm	HEIGHT OF OUTLETS mm	WEIGHT kg	PREINSTALLED DRAIN OUTLETS mm
700010		HD-PE	542 x 258 x 407	500 x 200 x 400	285	116 - 109 - 97	3	2 x Ø 110; 2 x Ø 160; 2 x Ø 200

N.B. Sizes and weights are subject to usual manufacturing tolerance values.